

GIGABIT ETHERNET ACCESS SWITCH WITH 1G OR 10G UPLINK OPTIONS

FOR INTERNET SERVICE PROVIDERS (ISPs),
MULTIPLE SYSTEM OPERATORS (MSOs)
AND SMB/ENTERPRISE NETWORKS



Overview

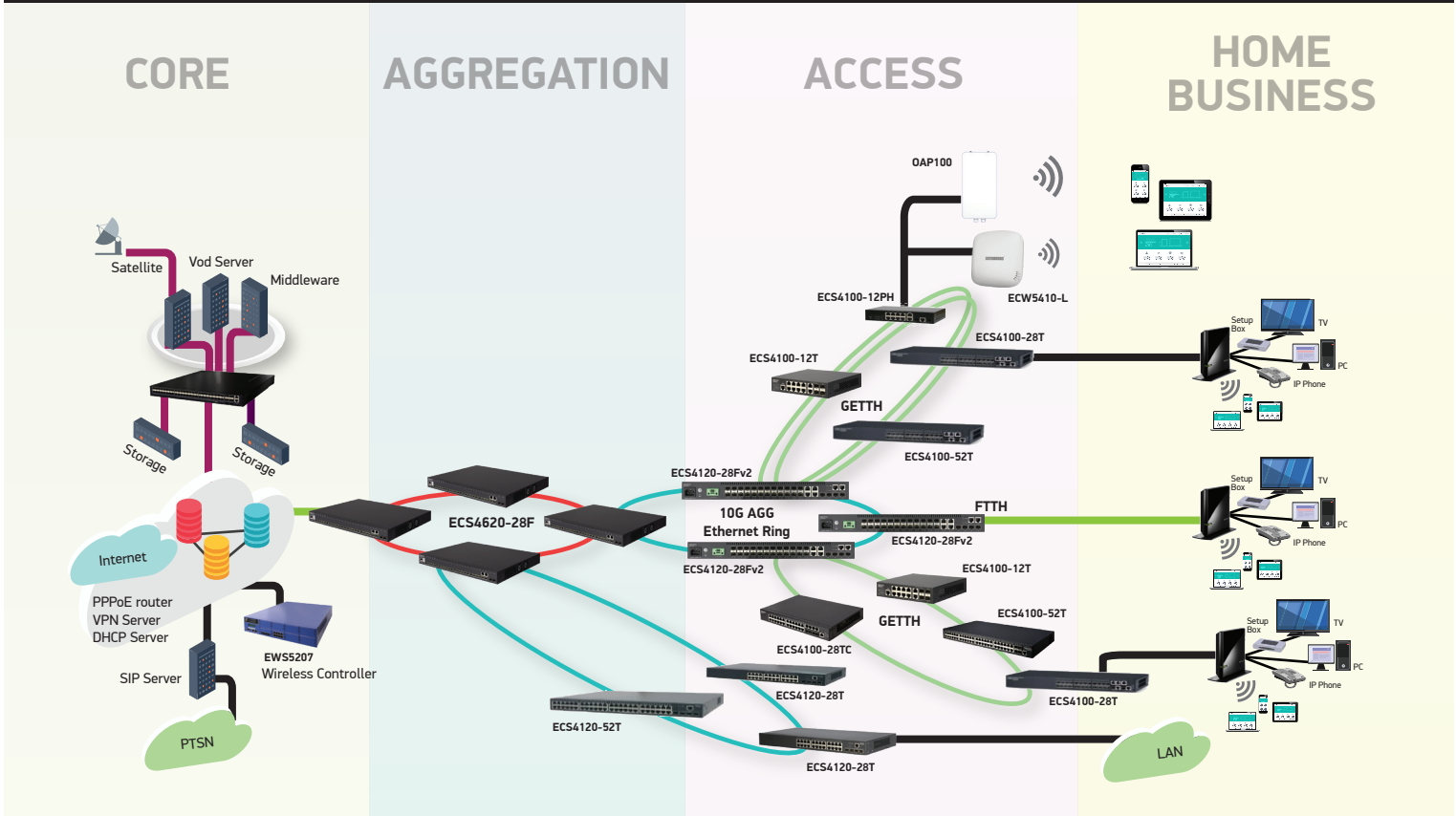
The Edgecore ECS4100-28T/52T switch is a Gigabit Ethernet access switch with four 1G uplink ports. These ECS4100 series switch is ideal for Internet Service Providers (ISPs) and Multiple System Operators (MSOs) to provide home users triple-play services with up to a Gigabit of bandwidth while ECS4120 series offer the options of 4 x 10G uplink bandwidth. It is also an ideal Gigabit access switch for SMB, enterprise, and campus networks. The ECS4100 series switch is packed with features that bring high availability, comprehensive security, robust multicast control, and advance QoS to the network edge, while maintaining simple management. The switch also supports the most advanced IPv6 management, IPv6 security, and IPv6 multicast control in accordance with the growth of IPv6 deployment. ISPs can expand their services from home to business users by providing a more reliable and resilient network (ITU-T G.8032 ERPS), L2 VPNs, and advanced OAM (Operations, Administration, and Maintenance) functions to ensure service-level agreements.

Features and Benefit

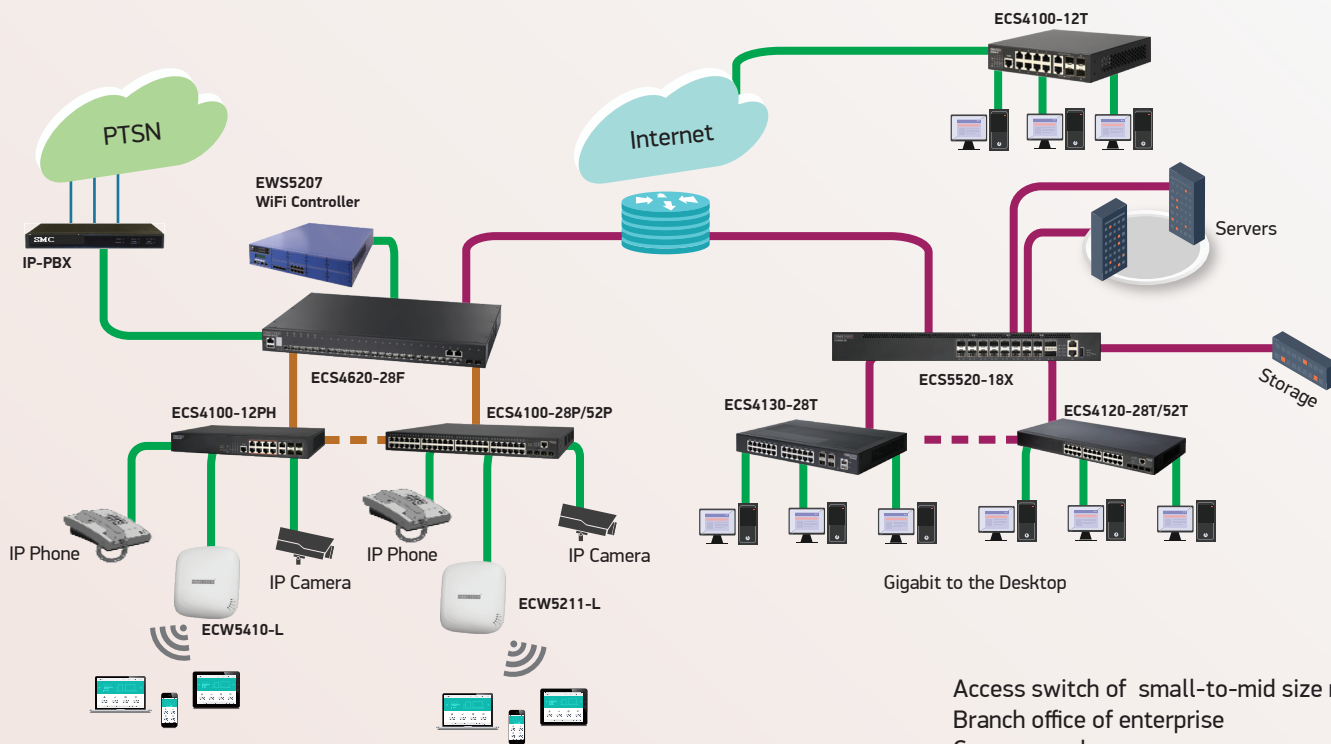
- ◆ Enhance robustness of multicast control to provide high quality IP-TV service via IGMP snooping, IGMP Immediate Leave, Leave Proxy, Multicast VLAN Registration (MVR)
- ◆ Ensure fully security of the services provider's network against attack, offering port security, IEEE802.1X port-based or MAC-based access control, DHCP Snooping, IP Source Guard, Access Control List (ACL), Guest VLAN, Dynamic ARP Inspection (DAI), and SSHv2 for secure Telnet and SSL/HTTPS encrypt Web access.
- ◆ Ease the management and troubleshooting with superior management, including industry-standard CLI, web interface, and SNMPv1, 2c, 3 and 4-group RMON.
- ◆ Differentiate network traffic and service with the advanced QoS features, such as Priority Queues, Traffic classification, Traffic scheduling, Rate Limiting
- ◆ Service providers can expand their business from home users to business users by providing more reliable and resiliency network (ITU-T G.8032 ERPS), Connectivity Fault Management (802.1ag, Y.1731) and ensuring SLA

Network Application

CARRIER AGGREGATION @ ACCESS SOLUTION



GE WITH GE/10G UPLINK ACCESS SWITCH APPLICATION



ECS4100 and ECS4120 Series Feature Matrix Table

High Performance Cost-effective.

Product Model	ECS4100-12T	ECS4100-12PH	ECS4100-28T	ECS4100-28TC	ECS4100-28P	ECS4100-52T	ECS4100-52P
Fixed Port							
RJ-45 10/100/1000 BASE-T Ports	8	8	24	24	24	48	48
PoE Ports	0	8	0	0	24	0	48
100/1000 BASE-X SFP Ports	2	2	4	0	4	4	4
Combo Gigabit (RJ-45/SFP) Ports	2	2	0	4	0	0	0
SFP+ 10 Gigabit Uplink Ports	0	0	0	0	0	0	0
GE out of band Management Port	No	No	No	No	No	No	No
RJ-45 Console Port	1	1	1	1	1	1	1
6KV Surge Protect	No	Yes	No	No	No	No	No
Power over Ethernet							
802.3af and 802.3at	No	Yes	No	No	Yes	No	Yes
Power Budget	N/A	180W	N/A	N/A	190W	N/A	370W
Physical Configuration							
Flash Memory	32 MB	32 MB	32 MB	32 MB	32 MB	32 MB	32 MB
SDRAM	256 MB	256 MB	256 MB	256 MB	256 MB	256 MB	256 MB
Packet Buffer	1.5MB	1.5MB	1.5MB	1.5MB	1.5MB	1.5MB	1.5MB
FAN/FANLESS	Fanless	Fan,48 dB (A)	Fanless	Fanless	Fan,53 dB (A)	Fanless	Fan,51.1 dB (A)
Operating Temperature	0°C to 50°C	0°C to 50°C	0°C to 50°C	0°C to 50°C	0°C to 50°C	0°C to 45°C	0°C to 50°C
Performance							
Switching Capability	24 Gbps	24 Gbps	56 Gbps	56 Gbps	56 Gbps	104 Gbps	104 Gbps
Forwarding Rate	17.85 Mpps	17.85 Mpps	41.6 Mpps	41.6 Mpps	41.6 Mpps	77.4 Mpps	77.4 Mpps
Management and Maintenance							
Management Interface	RJ45 Console Port, IPv6 Management, Telnet/SSHv2, HTTP/HTTPS, SNMPv1/v2c/v3, RMON (groups 1, 2, 3, 9)						
Firmware Configuration	Dual Images, Zero Touch Provision, Upload/Download: FTP, TFTP, HTTP						
OAM	IEEE 802.3ah OAM, IEEE 802.1ag CFM, Y.1731						
Monitoring	Port Mirror, RSPAN, sFlow						
Stacking Feature	Software stacking: IP Clustering						
Layer 2+ Feature							
IP Routing	IPv4/IPv6 Static Route RIP V1/V2						
VLAN							
	4K VLANs, VLAN Trunking, Port-Base VLAN, MAC-Base VLAN, IP Subnet VLAN, VLAN Translation						
	GVRP, IEEE802.1Q, Q-in-Q, Selective Q-in-Q						
DHCP Server							
	Support						
Ring Protection							
	(*) STP (IEEE802.1D) RSTP (IEEE802.1W), MSTP (IEEE802.1S), ERPSv1/v2 (ITU-T G.8032), UDLD, Spanning-Tree, Loopback Detection and Non-Spanning-Tree Loopback Dection						
Link Aggregation							
	Static Trunk, IEEE802.3ad LACP, Traffic Load balance						
Layer 2 Multicast Control							
	IGMP Snooping v1/v2/v3, IGMP Querier v1/v2, IGMP Filtering and Throttling, IGMP Immediate Leave, IGMP Snooping Leave Proxy						
	MVR, MVR Proxy, MLD v1/v2 Snooping						
Security Features							
IEEE 802.1x	Web Authentication, Port-Base, Guest VLAN, Mac-Base VLAN Assignment, QoS Assignment						
Port Security	Static/Dynamic MAC-Authentication Limit on the number of learned MAC Address, MAC Address Filter						
Access Control List	L2 MAC Address ACL, L3IPv4 and IPv6 ACL, L4 UDP/TCP port						
LAN Protection	IPv4/IPv6 DHCP Snooping, IPv4/IPv6 Source Guard						
AAA	Radius, Tacacs+						
Switch Protection	DoS Protection, CPU Protection						
BPDU/ Root Guard, BPDU Filter	BPDU Guard, Root Guard, and BPDU Filter						
QoS Features	Input and Output Rate-Limiting per Port, Traffic Classification Diffserv and Port-Based Traffic Policing, CoS 802.1P, DSCP, Re-marking of th 802.1p and DSCP, SP, WRR, SP+WRR Queue Scheduling Algorithms						
Dimensions (W x D x H) cm	18 x 16.4 x 3.75	28 x 22 x 4.4	44 x 22 x 4.4	44 x 33 x 4.4	33 x 23 x 4.4	44 x 22 x 4.4	44 x 33 x 4.4
Power Supply Unit							
100-240V AC PSU	•	•	•	•	•	•	•
Support ecCLOUD	Yes	Yes	Yes		Yes	Yes	Yes

Product Model	ECS4130-28T	ECS4120-28T	ECS4120-28Fv2	ECS4120-28Fv2-I	ECS4120-52T
Fixed Port					
RJ-45 10/100/1000 BASE-T Ports	24	24	0	0	48
PoE Ports	0	0	0	0	0
100/1000 BASE-X SFP Ports	0	0	20	20	0
Combo Gigabit (RJ-45/SFP) Ports	0	0	4	4	0
SFP+ 10 Gigabit Uplink Ports	4	4	4	4	4
GE out of band Management Port	No	No	1	1	No
RJ-45 Console Port	1	1	1	1	1
6KV Surge Protect	No	No	No	No	No
Power over Ethernet					
802.3af and 802.3at	No	No	No	No	No
Power Budget	N/A	N/A	N/A	N/A	N/A
Physical Configuration					
Flash Memory	1GB	256 MB	256 MB	256 MB	256 MB
SDRAM	512 MB	512 MB	512 MB	512 MB	512 MB
Packet Buffer	1.5MB	1.5MB	1.5MB	1.5MB	1.5MB
FAN/FANLESS	Fanless	Fanless	Fan	Fan	Fan
Operating Temperature	0°C to 45°C	0°C to 50°C	0°C to 50°C	-10°C to 65°C	0°C to 50°C
Performance					
Switching Capability	128 Gbps	128 Gbps	128 Gbps	128 Gbps	176 Gbps
Forwarding Rate	95 Mpps	95 Mpps	95 Mpps	95 Mpps	130 Mpps
Management and Maintenance					
Management Interface	RJ45 Console Port, IPv6 Management, Telnet/SSHv2, HTTP/HTTPS, SNMPv1/v2c/v3, RMON (groups 1, 2, 3, 9)				
Firmware Configuration	Dual Images, Zero Touch Provision, Upload/Download: FTP, TFTP, HTTP				
OAM	IEEE 802.3ah OAM, CFM	IEEE 802.3ah OAM, IEEE 802.1ag, CFM, Y.1731			
Monitoring	Port Mirror, RSPAN, sFlow				
Stacking Feature	Software stacking: IP Clustering				
Layer 2+ Feature					
IP Routing	IPv4 / IPv6 Static Route				
	-	RIP V1/V2			
VLAN					
	4K VLANs, VLAN Trunking, Port-Base VLAN, MAC-Base VLAN, IP Subnet VLAN, VLAN Translation				
	GVRP, IEEE802.1Q, Q-in-Q, Selective Q-in-Q				
DHCP Server					
	-	Support			
Ring Protection					
	STP (IEEE802.1D), RSTP (IEEE802.1W), MSTP (IEEE802.1S), ERPSv1/v2 (ITU-T G.8032), UDLD, Spanning-Tree, Loopback Detection and Non-Spanning-Tree Loopback Detection				
Link Aggregation					
	Static Trunk, IEEE802.3ad LACP, Traffic Load balance				
Layer 2 Multicast Control					
	GMP Snooping v1/v2/v3, IGMP Querier v1/v2, IGMP Filtering and Throttling, IGMP Immediate Leave, IGMP Snooping Leave Proxy MVR, MVR Proxy Switching, MLD v1/v2 Snooping				
Security Features					
IEEE 802.1x	Web Authentication, Port-Base, Mac-Base VLAN Assignment, Guest VLAN, QoS Assignment				
Port Security	Static /Dynamic MAC-Authentication Limit on the number of learned MAC Address, MAC Address Filter				
Access Control List	L2 MAC Address ACL, L3IPv4 and IPv6 ACL, L4 UDP/TCP port				
LAN Protection	IPv4/IPv6 DHCP Snooping, IPv4/IPv6 Source Guard				
AAA	Radius, Tacacs+				
Switch Protection	DoS Protection, CPU Protection				
BPDU/ Root Guard, BPDU Filter	BPDU Guard, Root Guard, and BPDU Filter				
QoS Features	Input and Output Rate-Limiting per Port, Traffic Classification Diffserv and Port-Based Traffic Policing, CoS 802.1P, DSCP, Re-marking of th 802.1p and DSCP SP, WRR, SP+WRR Queue Scheduling Algorithms				
	-	TrTCM (Two-Rate-Three-Color Marking)			
Dimensions (W x D x H) cm	33 x 22.9 x 4.4	44 x 22 x 4.4	44 x 22 x 4.4	44 x 22 x 4.4	44 x 28 x 4.4
Power Supply Unit					
100-240V AC PSU	•	•	•	•	•
-48V DC PSU	•	-	•	•	-
Support ecCLOUD		Yes	Yes	Yes	Yes



About Edgecore Networks

Edgecore Networks delivers wired and wireless networking products and solutions through channel partners and system integrators worldwide for the Data Center, Service Provider, Enterprise and SMB customers. Edgecore Networks is the leader in open networking providing a full line of open WiFi access points, packet transponders, virtual PON OLTs, and 1G, 2.5G, 10G, 25G, 100G and 400G OCP-ACCEPTED™ switches that offer choice of commercial and open source NOS and SDN software.

www.edge-core.com

© 2022 Edgecore Networks Corporation. All rights reserved.

Edgecore Networks reserves the right to amend, suspend or cancel these terms and conditions without notices.

Additional information : Email: sales@edge-core.com
Tel: +886-3-563-8888 | +1-949-336-6801 (Irvine,CA)